

PJLinkTEST4PJ

Operating Instructions

Version 1.0

November 17, 2004

Copyright(C) 2004-2005 JBMIA All rights reserved

Table of Contents

1	Overview	3
2	Main Window.....	3
2.1	Single Test.....	4
2.2	Total Test.....	4
3	Menu Bar.....	5
3.1	Set Up	6
3.1.1	Network.....	6
3.1.2	Test Set Up	6
3.1.3	Out of Parameter	7
3.2	Help.....	7
3.2.1	Version.....	7
4	Single Test.....	8
5	Total Test	10
5.1	Test method	10
5.2	Result.....	11
6	Command Log.....	11

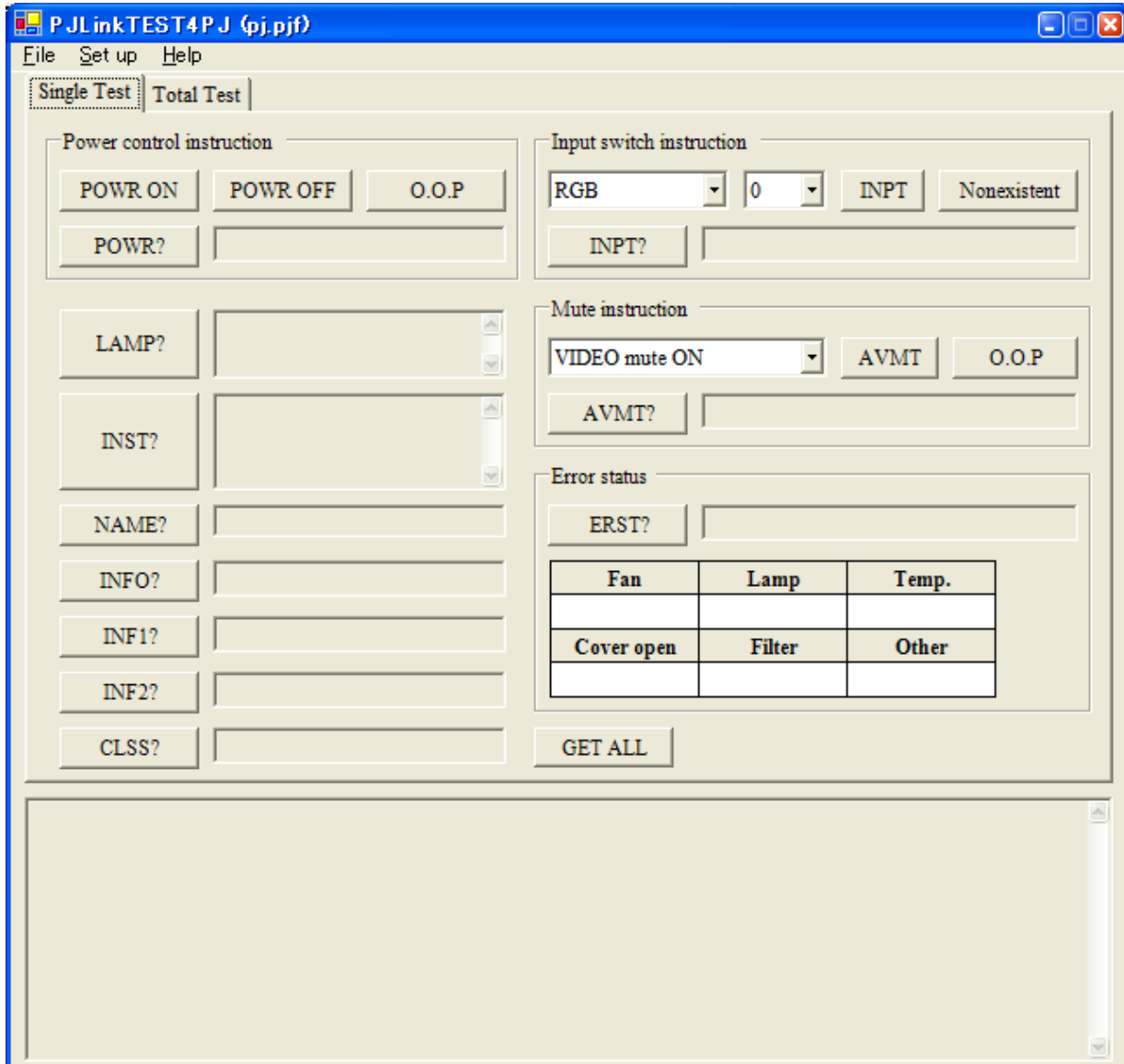
PJLinkTEST4PJ Operating Instructions

1 Overview

This manual describes operating procedures of Button Menu for PJLinkTEST4PJ.

2 Main Window

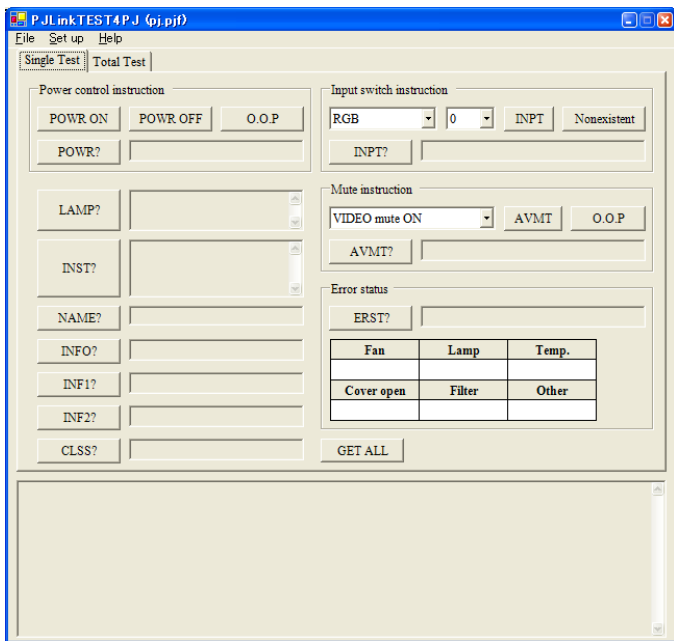
The following window will be displayed when you activate PJLinkTEST4PJ.



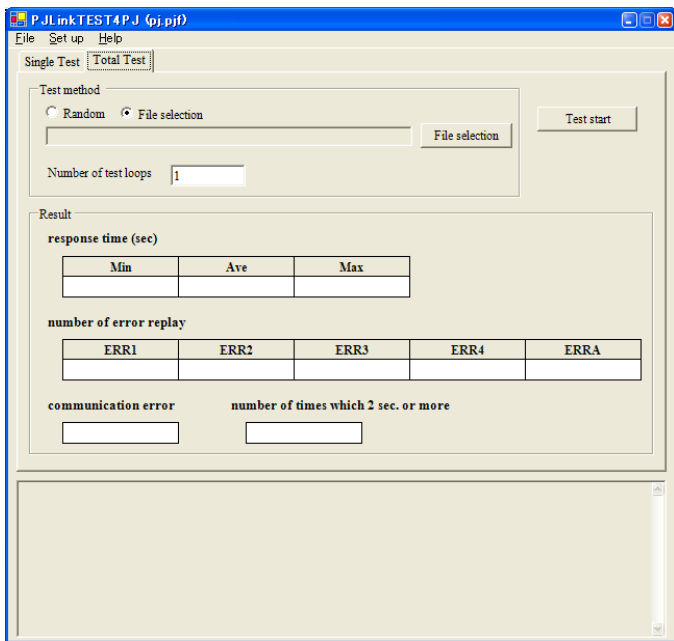
PJLinkTEST4PJ Operating Instructions

PJLinkTEST4PJ consists of two tab menus, "Single Test" and "Total Test", and there is a common command log display area at the bottom of the tab menus. In addition, the name of the configuration file (*.PJF) in current use will be displayed in the title bar.

2.1 Single Test

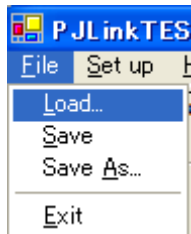


2.2 Total Test

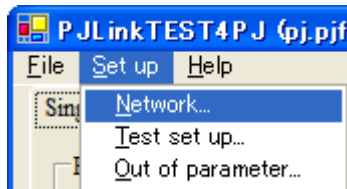


3 Menu Bar

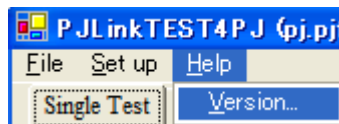
File



Set up



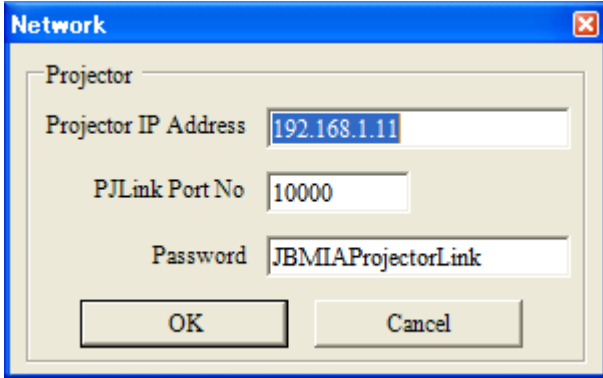
Help



Main Menu	Name of Menu	Contents of Process
File	Load	Choose an ini file, and load the specified ini file.
	Save	Save the current settings to the ini file.
	Save As...	Save the current settings as a new file.
	Exit	Exit out of the system.
Set Up	Network	Set up IP address, port numbers, and password for the projector.
	Test set up	Set up various test information.
	Out of Parameter	Set up out of parameter test.
Help	Version	Display version information.

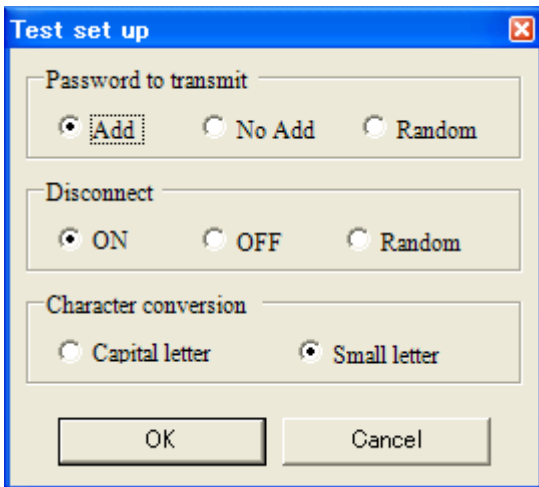
3.1 Set Up

3.1.1 Network



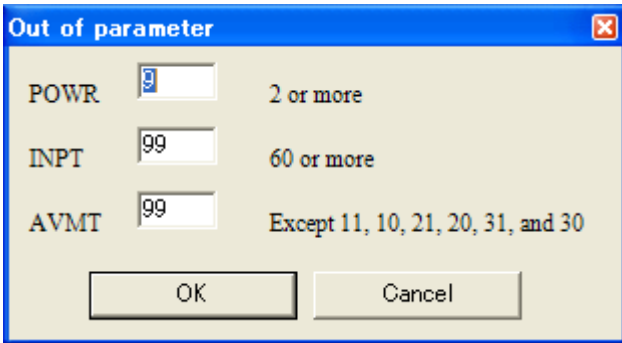
Projector IP Address	Set up IP address for the projector.
PJLink Port No	Set up connecting port numbers on the projector side.
Password	Set up the password for the projector. * The password will not be displayed as "****". It will be displayed as a plain text.

3.1.2 Test Set Up



Password to transmit	Choose the password to transmit from the following options. Established value / Random
Disconnect	Choose the test method from the following options. ON / Random When you specify the file selection, you must specify the file.
Character conversion	Set up the capital letter /small letter conversion of the command strings. Capital letter / Small letter

3.1.3 Out of Parameter



POWR	Set the value which issues at out of parameter by the projector power command.
INPT	Set the value which issues the input switch command to nonexistent input source.
AVMT	Set the value which issues the mute command at out of parameter

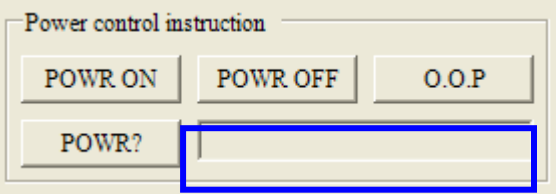
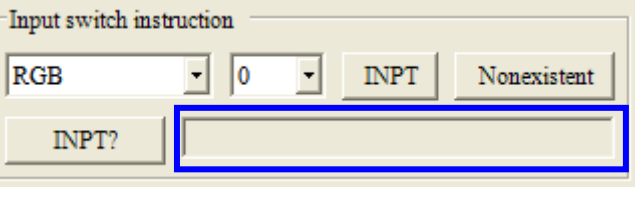
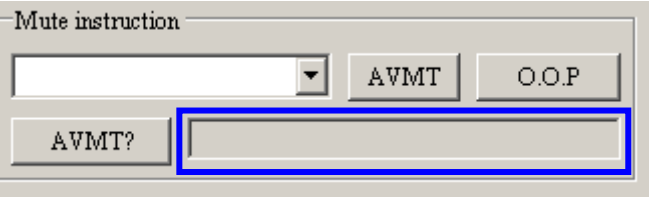
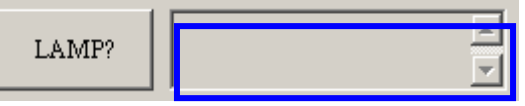
3.2 Help

3.2.1 Version

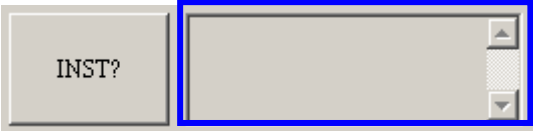
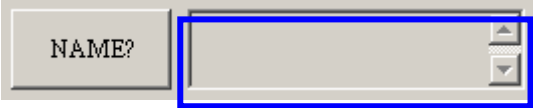
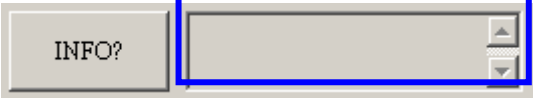
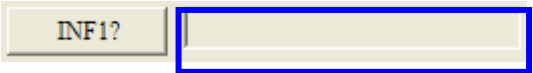


Version information will be displayed.



4 Single Test

Process Items	Contents	
<p>Power control instruction Issue the command/query about power to the projector.</p>  <p>Command/query response message will be displayed.</p>	POWR ON	Issue the command which turns on the projector.
	POWR OFF	Issue the command which turns off the projector.
	O.O.P	Issue the projector power command at out of parameter.
	POWR?	Query the projector power status.
<p>Input switch instruction Issue the command/query about input switch to the projector.</p>  <p>Command/query response message will be displayed.</p>	INPT	Issue the input switch command with the contents which are chosen at the combo box.
	Nonexistent	Issue the input switch command to nonexistent input source.
	INPT?	Query the current input switch status.
<p>Mute instruction Issue the command/query about mute to the projector.</p>  <p>Command/query response message will be displayed.</p>	AVMT	Issue the mute command with the contents which are chosen at the combo box.
	O.O.P	Issue the mute command at out of parameter.
	AVMT?	Query the current mute status.
<p>LAMP</p>  <p>Query response message will be displayed.</p>	LAMP?	Query the number of lamps and lamp hours.

PJLinkTEST4PJ Operating Instructions

Process Items		Contents
<p>INST</p>  <p>Query response message will be displayed.</p>	<p>INST?</p>	<p>Query the list which enables input switch.</p>
<p>NAME</p>  <p>Query response message will be displayed.</p>	<p>NAME?</p>	<p>Query the projector name.</p>
<p>INFO</p>  <p>Query response message will be displayed.</p>	<p>INFO?</p>	<p>Query other information. Information voluntarily listed by the projector maker.</p>
<p>INF1?</p>  <p>Query response message will be displayed.</p>	<p>INF1?</p>	<p>Query the maker name.</p>
<p>INF2?</p>  <p>Query response message will be displayed.</p>	<p>INF2?</p>	<p>Query the model name</p>
<p>CLSS</p>  <p>Query response message will be displayed.</p>	<p>CLSS?</p>	<p>Query class information.</p>
<p>Error status</p>	<p>ERST?</p>	<p>Query error status.</p>

PJLinkTEST4PJ Operating Instructions

Process Items	Contents									
<div style="border: 1px solid gray; padding: 5px;"> <p>Error status</p> <p>ERST? <input style="border: 2px solid blue;" type="text"/></p> <table border="1" style="border-collapse: collapse; width: 100%; text-align: center;"> <tr> <td style="border: 2px solid red;">Fan</td> <td style="border: 2px solid red;">Lamp</td> <td style="border: 2px solid red;">Temp.</td> </tr> <tr> <td style="border: 2px solid red;">Cover open</td> <td style="border: 2px solid red;">Filter</td> <td style="border: 2px solid red;">Other</td> </tr> <tr> <td style="border: 2px solid red;"> </td> <td style="border: 2px solid red;"> </td> <td style="border: 2px solid red;"> </td> </tr> </table> <p>Each error status of the query result will be displayed.</p> <p>Query response message will be displayed.</p> </div>	Fan	Lamp	Temp.	Cover open	Filter	Other				
Fan	Lamp	Temp.								
Cover open	Filter	Other								
<input type="button" value="GET ALL"/>	Query all.									

5 Total Test

Test method

Random
 File selection

Number of test loops

Result

response time (sec)

Min	Ave	Max
0	0	0

number of error replay

ERR1	ERR2	ERR3	ERR4	ERRA
0	0	0	0	0

communication error

 number of times which 2 sec. or more

5.1 Test method

You can choose Random or File selection.

If you specify the File selection, you will specify the script file used in test, and you will also specify number of test loops. You can start with Test start.

PJLinkTEST4PJ Operating Instructions

5.2 Result

response time	Min	Display minimum value of response time in test.
	Ave	Display average value of response time in test.
	Max	Display maximum value of response time in test.
number of error replay	ERR1	Number of undefined command reception
	ERR2	Number of out of parameter reception
	ERR3	Number of acceptance period error reception
	ERR 4	Number of projector error reception
	ERRA	Number of password error reception
communication error		Number of communication error (Number of Socket error)
number of times which 2sec. or more		Number of times which 2 sec. or more for response.

6 Command Log

The issued commands and all logs communicated with PJLink4CNT will be displayed in the textbox.

