

# PJLinkTEST4CNT

## Operating Instructions

Version 2.0.1

June 12, 2017

Copyright(C) 2004-2016 JBMIA All rights reserved

## Contents

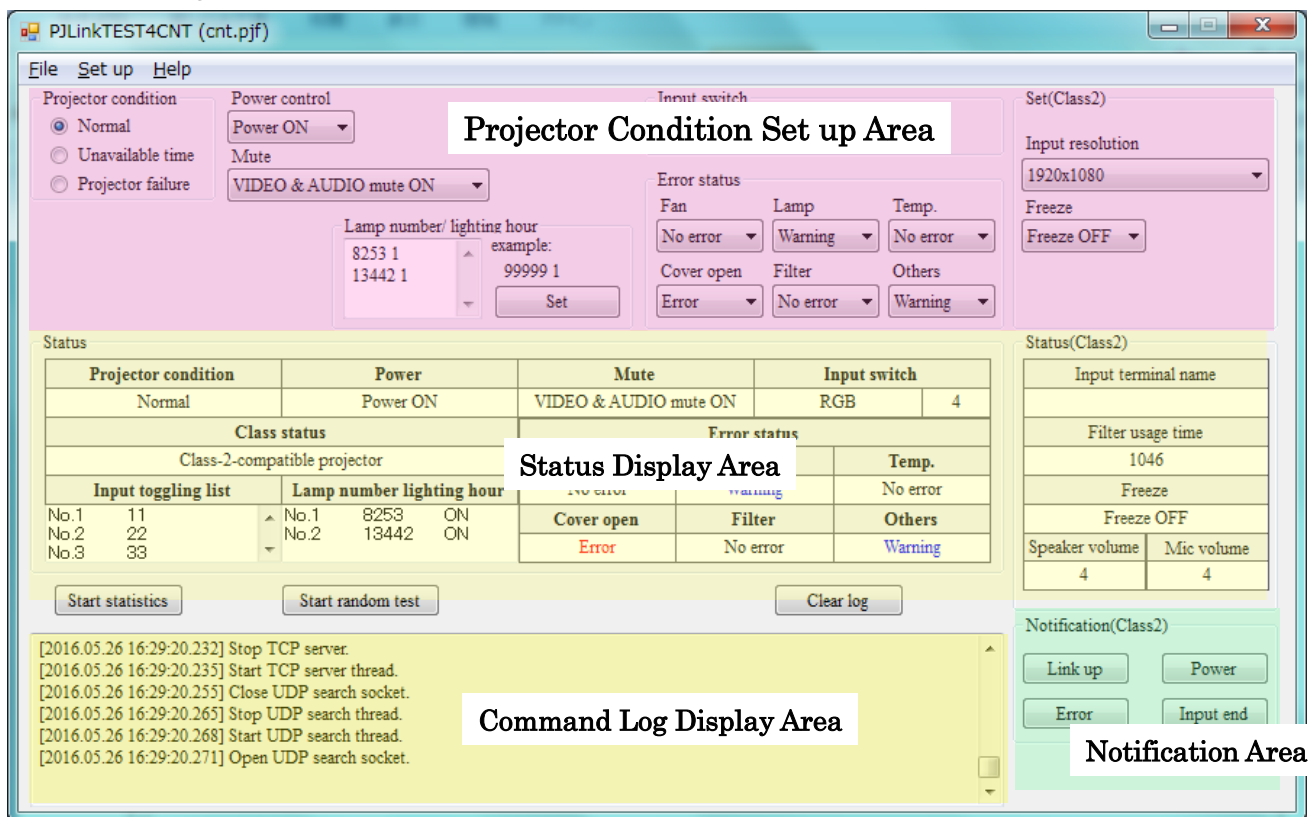
1	Overview .....	3
2	Main Window.....	3
3	Menu Bar .....	4
	3.1 <i>Set up / Network Menu</i> .....	4
	3.2 <i>Set up / Projector set up Menu</i> .....	5
	3.3 <i>Set up / Test set up Menu</i> .....	6
4	Projector Condition Set up Area .....	7
5	Status Display Area .....	8
6	Search Response.....	9
7	Notification Area .....	9
8	Error Statistics.....	10
	8.1 <i>Operation Button</i> .....	10
	8.2 <i>Result Dialog</i> .....	10
9	Random Test.....	11
	9.1 <i>Start button</i> .....	11
10	Command Log .....	11
11	Configuration .....	11
	11.1 <i>Base configuration file [PJLinkTEST4COM.xml]</i> .....	11
	11.2 <i>Pjf setting file [(filename).pjf]</i> .....	16
12	Notice & Limitation .....	20

# 1 Overview

PJLinkTEST4CNT is an application which takes the places of display device (projector/display). This manual describes operating procedures of Button Menu.

# 2 Main Window

The following window will be displayed when you start PJLinkTEST4CNT.



**Figure 1 Main Window**

PJLinkTEST4CNT is composed of 4 areas of [Projector Condition Set up], [Status Display], [Notification] and [Command Log Display].

In addition, the name of the configuration file (\*.pjf) in current use will be displayed in the title bar.

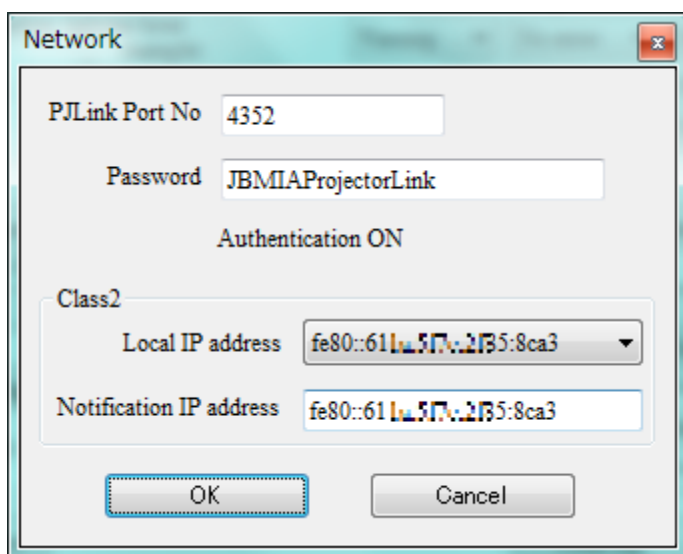
- [Projector Condition Set up Area] simulates for operating buttons of a display device.
- [Status Display Area] displays status of the display device.
- [Notification Area] is used for sending to a PC (PJLinkTEST4PJ) of specified IP address.
- [Command Log Display Area] displays all of command and its response.

### 3 Menu Bar

**Table 1 Menu Bar items**

Name of Main Menu	Name of Menu	Contents of Process
File	Load...	Load the setting from a pjf configuration file.
	Save	Save the current settings to the pjf configuration file.
	Save As...	Save the current settings as a new file.
	Exit	Exit the application.
Set Up	Network...	Set up port number, authentication password and IP address.
	Projector set up...	Set up basic information for the projector.
	Test set up...	Set up test conditions.
Help	Version...	Display version information.

#### 3.1 Set up | Network Menu



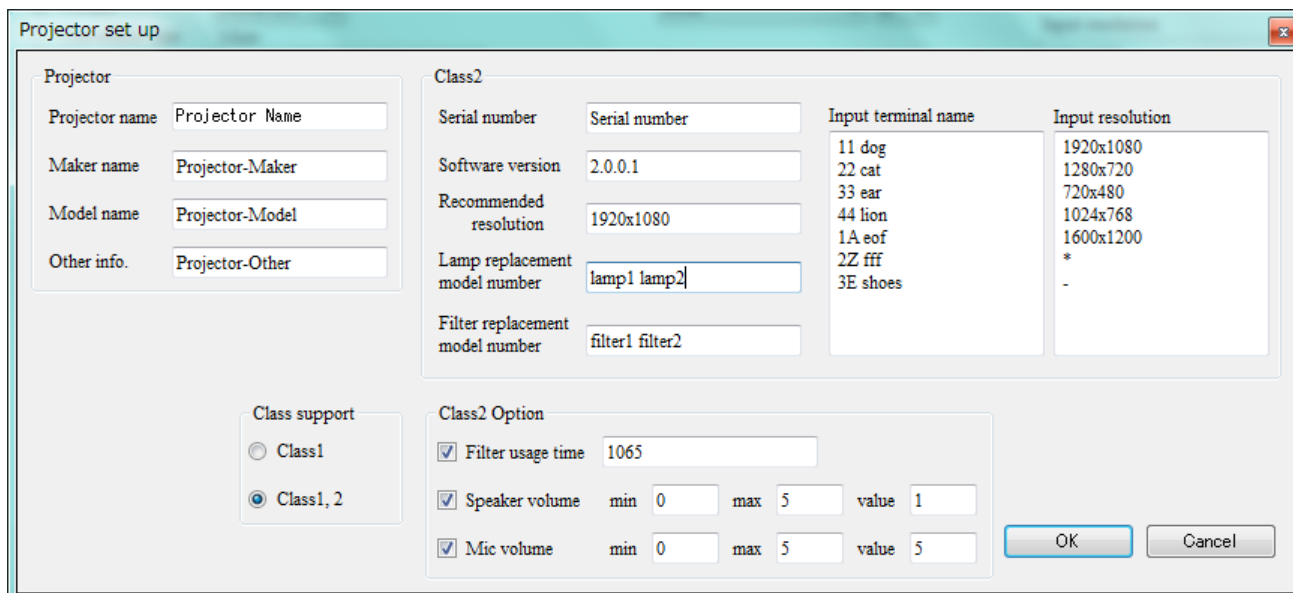
**Figure 2 Network Dialog**

**Table 2 Network Dialog Items**

Items	Contents
PJLink Port No	Set up port numbers of PJLink.
Password	Set up the password for PJLink. * The password is not displayed as “*”, is displayed in plain text.
Authentication	Display Authentication settings in Test set up.
Local IP address	Set up the IP address of local PC.

Notification IP address      Set up the IP address of the notification destination.

### 3.2 Set up | Projector set up Menu



**Figure 3 Projector set up Dialog**

**Table 3 Projector set up Dialog Items**

Items	Contents
Projector name	Set up the display device name.
Maker name	Set up the manufacturer name.
Model	Set up the model name.
Other Info.	Set up other information.
Class support	Set up the supported Class.
Serial number	Set up the serial number of the display device.
Software version	Set up the software version of the display device.
Recommended resolution	Set up the recommended resolution.
Lamp replacement model number	Set up the lamp parts name of replacement. Use SPACE character as separator. When there is no lamp, leave this field in blank.
Filter replacement model number	Set up the air filter parts name of replacement. Use SPACE character as separator. When there is no filter, leave this field in blank.

Items	Contents
Input terminal name	Set up the switchable input terminal number and name. Each input source is specified as [Terminal number] and [Terminal name] with SPACE separator. Each input source is separated by linefeed character. Terminal number: Set up the range as 11~5Z. Terminal name: UTF-8.
Input resolution	Set up horizontal and vertical resolutions with "x". If no input signal, use "-"(2D). If input signal is out of range, use "*" (2A).
Filter usage time (Option)	Set up the filter usage time. If checked in the checkbox, this option is available. Set up filter usage time in the text box.
Speaker volume (Option)	Set up the Speaker volume. If checked in the checkbox, this option is available. Set up max/min value in the max/min text box, and current value in the value text box.
Mic volume (Option)	Set up the Microphone volume. If checked in the checkbox, this option is available. Set up max/min value in the max/min text box, and current value in the value text box.

### 3.3 Set up | Test set up Menu

The setting of [Test set up] affects "Single Test" and "Total Test".

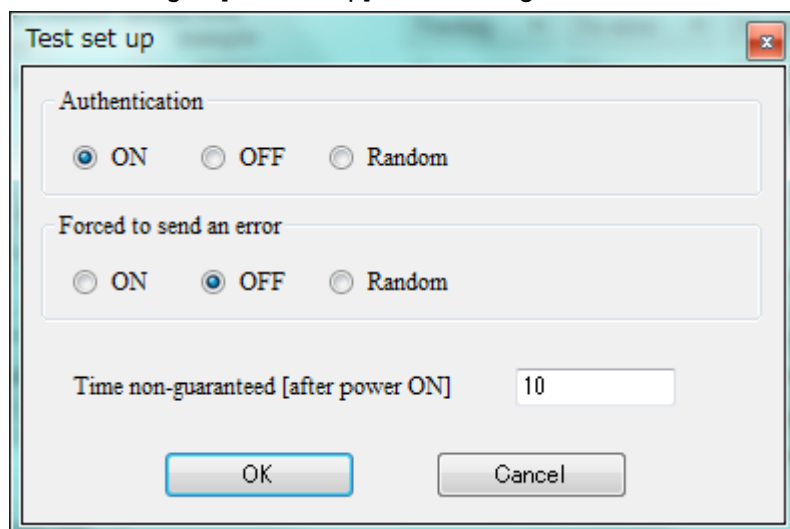


Figure 4 Test set up Dialog

**Table 4 Test set up Dialog Items**

Items	Contents
Authentication	Set up whether to conduct authentication. ON: Authentication, OFF: No authentication, Random: switching randomly.
Forced to send an error	Set up whether send error code or not. ON: Force to send, OFF: Not send error, Random: switching randomly. Error code is randomly selected among ERR1, ERR2, ERR3, ERR4, ERRA.
Time non-guaranteed [after power ON]	Set up the time of non-guaranteed operation period.

## 4 Projector Condition Set up Area

The following projector condition can be set at Projector Condition Set Up Area.

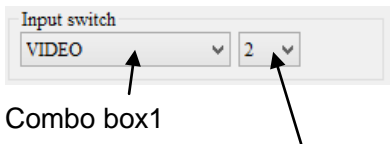
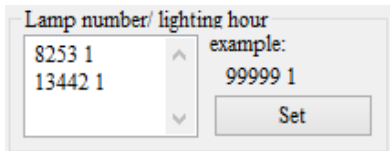
When the contents of the following items other than “Lamp number/lighting hour” are changed, it will be immediately available in the setting.

“Lamp number/lighting hour” is set by clicking the “Set” button.

**Figure 5 Condition Set up Area**

**Table 5 Condition Set up Items**

Items	Options	Contents
Projector condition	Normal, Unavailable time, and projector failure	Set up the status of display device.
Power Control	Power ON, Power OFF, Cooling, and Warning	Set up the power status of display device.
Mute	Video mute ON, Audio mute ON, Video and Audio mute ON, and Video and Audio mute OFF	Set up the mute status.

Items	Options	Contents
Input switch  Combo box1 Combo box2	Combo box1 option is selected among RGB, VIDEO, DEGITAL, STRAGE, and NETWORK.  Combo box2 option is selected from 1-Z.	Set up the input source.
Lamp number/lighting hour 	Each lamp has [usage time] and [lamp lighting status] with SPACE character. Each lamp is separated by linefeed character.  Usage time is set in the range 0-99999. Lamp lighting status is 1:ON, 0:OFF.	Set up the lamp usage time, and lighting status.
Fan, Lamp, Temp., Cover Open, Filter, Others in Error status.	No error, Warning, Error	Set up each Error state.
Input resolution	Items can be selected in Projector set up.	Set up the input resolution.
Freeze	Freeze ON, Freeze OFF	Set up the freeze status.

## 5 Status Display Area

This field shows current status of display device.

Projector condition				Power		Mute		Input switch			
Normal				Power ON		AUDIO mute ON		DIGITAL 3			
Class status						Error status					
Class-2-compatible projector						Fan		Lamp		Temp.	
Input toggling list			Lamp number lighting hour			No error		No error		No error	
No.1	11		No.1	8253	ON	Cover Open		Filter		Others	
No.2	22		No.2	13442	ON	No error		No error		No error	
No.3	33										

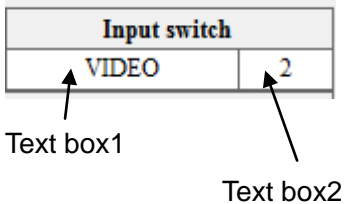
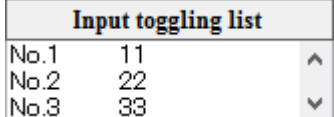
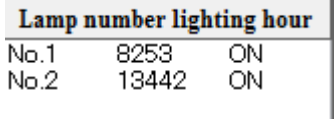
Status(Class2)	
Input terminal name	
dog	
Filter usage time	
1046	
Freeze	
Freeze OFF	
Speaker volume	Mic volume
0	1

Figure 6 Status display area

Table 6 Status Display Items

Status Display Items	Contents
Projector condition	Display status of current display device from Normal, Unavailable time, Projector failure.
Power	Display current power status from Power ON, Power OFF, Cooling down, and Warming up.



Status Display Items	Contents
Class status	Display current PJLink class from Class-1-compatible projector, Class-2-compatible projector.
Mute	Display current mute status from Video mute ON, Audio mute ON, Video & Audio mute ON, and Video & Audio mute OFF.
Input switch 	Display current input source with combination of: Text box1 is RGB, VIDEO, DEGITAL, STRAGE, and NETWORK. Text box2 is 1-Z.
Input toggling list 	Display current switchable list of input source.
Lamp number lighting hour 	Display current lamp usage time, lighting status in the list box.
Fan, Lamp, Temp., Cover Open, Filter, Others in the Error status	Display current error status among No error, Warning, Error.
Input terminal name	Display input terminal name which matches the input terminal number.
Filter usage time	Display the Filter usage time.
Freeze	Display current Freeze status.
Speaker volume	Display current Speaker Volume.
Mic volume	Display current Microphone Volume.

## 6 Search Response

When this application receives the search command, it will respond the MAC address.

## 7 Notification Area

To send Notification command to the specified Notification IP address, press the following Notification buttons.

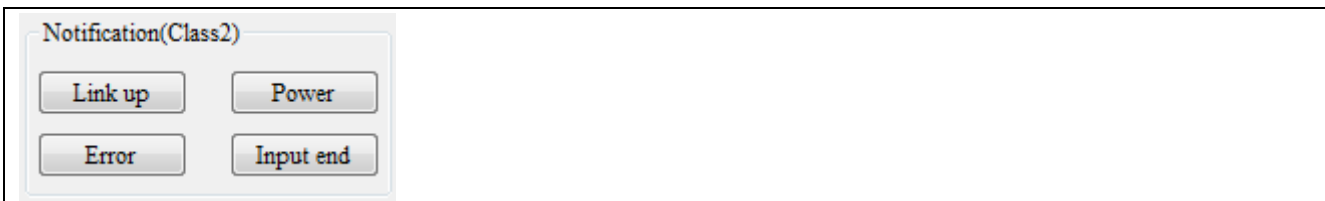


Figure 7 Notification buttons

## 8 Error Statistics

It takes the error statistics in PJLink4CNT.

### 8.1 Operation Button

[Start statistics] button: Start to take Error Statistics. The button name is changed to [Stop statistics].

[Stop statistics] button: Stop to take statistics. The button name is changed to [Start statistics].

Result Dialog is displayed.

### 8.2 Result Dialog

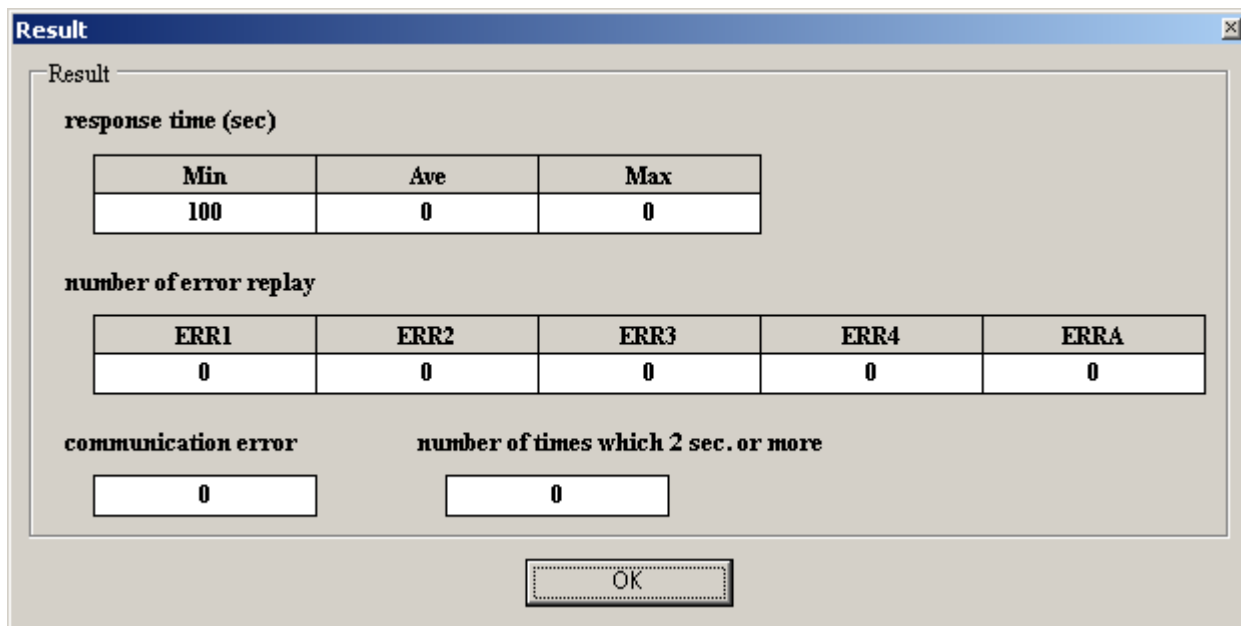


Figure 8 Statistics Result Dialog

Table 7 Statistics Result Items

Items	Items	Contents
response time	Min	Display minimum value of response time in test.
	Ave	Display average value of response time in test.
	Max	Display maximum value of response time in test.
number of error replay	ERR1	Number of undefined command reception.
	ERR2	Number of out of parameter reception.
	ERR3	Number of acceptance period error reception.

	ERR4	Number of projector error reception.
	ERRA	Number of password error reception.
communication error	—	Number of communication error. (Number of Socket error)
number of times which 2sec. or more	—	Number of times which takes more than 2 sec. for response.

## 9 Random Test

This changes the status of display device randomly.

### 9.1 Start button

[Start random test] button: Start to change the status randomly to every 5 sec. The button name is changed to [Stop random test].

[Stop random test] button: Stop the random test and reset to the contents of pjf configuration file. The button name is changed to [Start random test].

## 10 Command Log

All logs of communicated commands and responses are displayed in the textbox.

You can clear the log area by pressing [Clear log] button.

## 11 Configuration

Menu settings are saved into the following 2 files.

These are loaded and set up at start up.

- Base configuration file [PJLinkTEST4CNT.xml]
- pjf configuration file [(filename).pjf]

pjf configuration file can be selected in the File menu.

### 11.1 Base configuration file [PJLinkTEST4COM.xml]

This file includes string data to be displayed in the application.

When you exit the application, the used filename is saved in pjf Configuration file.

**Table 8 Application display strings**

Items	XML paramters
Power Status	<arr_powr>

PJLinkTEST4CNT Operating Instructions

Items	XML paramters
Char. display	<pre> &lt;Cls_ItemValue&gt;   &lt;statusName&gt;Power OFF&lt;/statusName&gt;   &lt;statusValue&gt;0&lt;/statusValue&gt; &lt;/Cls_ItemValue&gt; &lt;Cls_ItemValue&gt;   &lt;statusName&gt;Power ON&lt;/statusName&gt;   &lt;statusValue&gt;1&lt;/statusValue&gt; &lt;/Cls_ItemValue&gt; &lt;Cls_ItemValue&gt;   &lt;statusName&gt;Cooling&lt;/statusName&gt;   &lt;statusValue&gt;2&lt;/statusValue&gt; &lt;/Cls_ItemValue&gt; &lt;Cls_ItemValue&gt;   &lt;statusName&gt;Warm up&lt;/statusName&gt;   &lt;statusValue&gt;3&lt;/statusValue&gt; &lt;/Cls_ItemValue&gt; &lt;/arr_powr&gt; </pre>
AV Mute char. display	<pre> &lt;arr_avmt&gt;   &lt;Cls_ItemValue&gt;     &lt;statusName&gt;VIDEO mute ON&lt;/statusName&gt;     &lt;statusValue&gt;11&lt;/statusValue&gt;   &lt;/Cls_ItemValue&gt;   &lt;Cls_ItemValue&gt;     &lt;statusName&gt;AUDIO mute ON&lt;/statusName&gt;     &lt;statusValue&gt;21&lt;/statusValue&gt;   &lt;/Cls_ItemValue&gt;   &lt;Cls_ItemValue&gt;     &lt;statusName&gt;VIDEO &amp; AUDIO mute ON&lt;/statusName&gt;     &lt;statusValue&gt;31&lt;/statusValue&gt;   &lt;/Cls_ItemValue&gt;   &lt;Cls_ItemValue&gt;     &lt;statusName&gt;VIDEO &amp; AUDIO mute OFF&lt;/statusName&gt;     &lt;statusValue&gt;30&lt;/statusValue&gt;   &lt;/Cls_ItemValue&gt; &lt;/arr_avmt&gt; </pre>
Command Class display	<pre> &lt;arr_clss&gt;   &lt;Cls_ItemValue&gt; </pre>

PJLinkTEST4CNT Operating Instructions

Items	XML paramters
	<pre> &lt;statusName&gt;Class-1-compatible projector&lt;/statusName&gt; &lt;statusValue&gt;1&lt;/statusValue&gt; &lt;/Cls_ItemValue&gt; &lt;Cls_ItemValue&gt; &lt;statusName&gt;Class-2-compatible projector&lt;/statusName&gt; &lt;statusValue&gt;2&lt;/statusValue&gt; &lt;/Cls_ItemValue&gt; &lt;/arr_cls&gt; </pre>
INPUT string	<pre> &lt;arr_inpt&gt; &lt;Cls_ItemValue&gt; &lt;statusName&gt;RGB&lt;/statusName&gt; &lt;statusValue&gt;1&lt;/statusValue&gt; &lt;/Cls_ItemValue&gt; &lt;Cls_ItemValue&gt; &lt;statusName&gt;VIDEO&lt;/statusName&gt; &lt;statusValue&gt;2&lt;/statusValue&gt; &lt;/Cls_ItemValue&gt; &lt;Cls_ItemValue&gt; &lt;statusName&gt;DIGITAL&lt;/statusName&gt; &lt;statusValue&gt;3&lt;/statusValue&gt; &lt;/Cls_ItemValue&gt; &lt;Cls_ItemValue&gt; &lt;statusName&gt;STRAGE&lt;/statusName&gt; &lt;statusValue&gt;4&lt;/statusValue&gt; &lt;/Cls_ItemValue&gt; &lt;Cls_ItemValue&gt; &lt;statusName&gt;NETWORK&lt;/statusName&gt; &lt;statusValue&gt;5&lt;/statusValue&gt; &lt;/Cls_ItemValue&gt; &lt;/arr_inpt&gt; </pre>
Fan Error status display	<pre> &lt;arr_err_fan&gt; &lt;Cls_ItemValue&gt; &lt;statusName&gt;No error&lt;/statusName&gt; &lt;statusValue&gt;0&lt;/statusValue&gt; &lt;/Cls_ItemValue&gt; &lt;Cls_ItemValue&gt; &lt;statusName&gt;Warning&lt;/statusName&gt; </pre>

PJLinkTEST4CNT Operating Instructions

Items	XML paramters
	<pre> &lt;statusValue&gt;1&lt;/statusValue&gt; &lt;/Cls_ItemValue&gt; &lt;Cls_ItemValue&gt;   &lt;statusName&gt;Error&lt;/statusName&gt;   &lt;statusValue&gt;2&lt;/statusValue&gt; &lt;/Cls_ItemValue&gt; &lt;/arr_err_fan&gt; </pre>
Lamp Error status display	<pre> &lt;arr_err_lamp&gt;   &lt;Cls_ItemValue&gt;     &lt;statusName&gt;No error&lt;/statusName&gt;     &lt;statusValue&gt;0&lt;/statusValue&gt;   &lt;/Cls_ItemValue&gt;   &lt;Cls_ItemValue&gt;     &lt;statusName&gt;Warning&lt;/statusName&gt;     &lt;statusValue&gt;1&lt;/statusValue&gt;   &lt;/Cls_ItemValue&gt;   &lt;Cls_ItemValue&gt;     &lt;statusName&gt;Error&lt;/statusName&gt;     &lt;statusValue&gt;2&lt;/statusValue&gt;   &lt;/Cls_ItemValue&gt; &lt;/arr_err_lamp&gt; </pre>
Temp. Error status display	<pre> &lt;arr_err_temp&gt;   &lt;Cls_ItemValue&gt;     &lt;statusName&gt;No error&lt;/statusName&gt;     &lt;statusValue&gt;0&lt;/statusValue&gt;   &lt;/Cls_ItemValue&gt;   &lt;Cls_ItemValue&gt;     &lt;statusName&gt;Warning&lt;/statusName&gt;     &lt;statusValue&gt;1&lt;/statusValue&gt;   &lt;/Cls_ItemValue&gt;   &lt;Cls_ItemValue&gt;     &lt;statusName&gt;Error&lt;/statusName&gt;     &lt;statusValue&gt;2&lt;/statusValue&gt;   &lt;/Cls_ItemValue&gt; &lt;/arr_err_temp&gt; </pre>
Cover Error Status display	<pre> &lt;arr_err_cover&gt;   &lt;Cls_ItemValue&gt; </pre>

PJLinkTEST4CNT Operating Instructions

Items	XML paramters
	<pre> &lt;statusName&gt;No error&lt;/statusName&gt; &lt;statusValue&gt;0&lt;/statusValue&gt; &lt;/Cls_ItemValue&gt; &lt;Cls_ItemValue&gt; &lt;statusName&gt;Warning&lt;/statusName&gt; &lt;statusValue&gt;1&lt;/statusValue&gt; &lt;/Cls_ItemValue&gt; &lt;Cls_ItemValue&gt; &lt;statusName&gt;Error&lt;/statusName&gt; &lt;statusValue&gt;2&lt;/statusValue&gt; &lt;/Cls_ItemValue&gt; &lt;/arr_err_cover&gt; </pre>
<p>Filter error Status display</p>	<pre> &lt;arr_err_filter&gt; &lt;Cls_ItemValue&gt; &lt;statusName&gt;No error&lt;/statusName&gt; &lt;statusValue&gt;0&lt;/statusValue&gt; &lt;/Cls_ItemValue&gt; &lt;Cls_ItemValue&gt; &lt;statusName&gt;Warning&lt;/statusName&gt; &lt;statusValue&gt;1&lt;/statusValue&gt; &lt;/Cls_ItemValue&gt; &lt;Cls_ItemValue&gt; &lt;statusName&gt;Error&lt;/statusName&gt; &lt;statusValue&gt;2&lt;/statusValue&gt; &lt;/Cls_ItemValue&gt; &lt;/arr_err_filter&gt; </pre>
<p>Other Error Status display</p>	<pre> &lt;arr_err_others&gt; &lt;Cls_ItemValue&gt; &lt;statusName&gt;No error&lt;/statusName&gt; &lt;statusValue&gt;0&lt;/statusValue&gt; &lt;/Cls_ItemValue&gt; &lt;Cls_ItemValue&gt; &lt;statusName&gt;Warning&lt;/statusName&gt; &lt;statusValue&gt;1&lt;/statusValue&gt; &lt;/Cls_ItemValue&gt; &lt;Cls_ItemValue&gt; &lt;statusName&gt;Error&lt;/statusName&gt; </pre>

Items	XML paramters
	<pre>&lt;statusValue&gt;2&lt;/statusValue&gt; &lt;/Cls_ItemValue&gt; &lt;/arr_err_others&gt;</pre>
Freeze Status display	<pre>&lt;arr_freeze&gt; &lt;Cls_ItemValue&gt; &lt;statusName&gt;Freeze OFF&lt;/statusName&gt; &lt;statusValue&gt;0&lt;/statusValue&gt; &lt;/Cls_ItemValue&gt; &lt;Cls_ItemValue&gt; &lt;statusName&gt;Freeze ON&lt;/statusName&gt; &lt;statusValue&gt;1&lt;/statusValue&gt; &lt;/Cls_ItemValue&gt; &lt;/arr_freeze&gt;</pre>

**Table 9 Filenames of this application**

Items	XML parameters
Pjf configuration filename	<pre>&lt;PjfFileName&gt;cnt.pjf&lt;/PjfFileName&gt;</pre>
Log filename	<pre>&lt;LogFileName&gt;PJLinkTEST4CNT.log&lt;/LogFileName&gt;</pre>
TCP Connection timeout (unit: milliseconds)	<pre>&lt;TcpTimeout&gt;30000&lt;/TcpTimeout&gt;</pre>

## 11.2 Pjf setting file [ (filename).pjf ]

This file saves status setting of the display device of this application.

This file will be saved when the application exit.

When start up this application, the pjf Configuration file which is used the last time will be loaded. The loaded configuration filename is displayed in title bar of this application.

The file extension is pjf, and file format is xml.

<Setup>Item of XML Tag can be changed on application menu.

<Disp>Item of XML Tag cannot be changed because of holding status of the display device.

It's prohibited to use "ERR" string to the top so as not to make a mistake it for the Error code.

**Table 10 <Setup> Items**

XML Tag	Contents
<pre>&lt;PortNo&gt;4352&lt;/PortNo&gt;</pre>	Port number for PJLink.



PJLinkTEST4CNT Operating Instructions

XML Tag	Contents
<Password>JBMIAPjectorLink</Password>	Password of PJLink communication This value is limited to 32 bytes max.
<info_name>Projector Name</info_name>	Projector Name. Code: UTF-8. This value is limited to 64 chars max.
<info_maker>Projector-Maker</info_maker>	Manufacturer name. This value is limited to 32 bytes max.
<info_model>Projector-Model</info_model>	Model Name. This value is limited to 32 bytes max.
<info_other>Projector-Other</info_other>	Other Information. This value is limited to 32 bytes max.
< Authentication >0</ Authentication >	Authentication Choice. 0: ON, 1: OFF, 2: Random.
<ErrTrans>1</ErrTrans>	Transmit Error code. 0: ON, 1: OFF, 2: Random. Error code is selected randomly among ERR1, ERR2, ERR3, ERR4, ERRA. ON: Force to send Error code. OFF: When there is an error, send Error. Random: Force to send error randomly.
<Nonguaranteed>10</Nonguaranteed>	Time for not guaranteed Operation. (unit: sec.)
<pjClass2>true</pjClass2>	Class 2 command switch. true: Class 1 + Class 2, false: Class 1 only.
<LocalIPAddress>::1</LocalIPAddress>	Local IP address. IPV6 or IPV4.
<NotificationIPAddress>::1</NotificationIPAddress>	Destination of notification IP address. IPV6 or IPV4.
<SerialNumber>Serial number</SerialNumber>	Serial number of projector device. This value is limited to 64 bytes max.
<SoftwareVersion>2.0.0.0</SoftwareVersion>	Software version of projector device. This value is limited to 64 bytes max.
<pre> &lt;INSTINNM&gt;   &lt;Dictionary&gt;     &lt;Key&gt;       &lt;string&gt;11&lt;/string&gt;     &lt;/Key&gt; </pre>	List of Input terminal and name. They are corresponding to INST? INNМ?

PJLinkTEST4CNT Operating Instructions

XML Tag	Contents
<pre> &lt;Value&gt;   &lt;string&gt;dog&lt;/string&gt; &lt;/Value&gt; &lt;/Dictionary&gt; &lt;Dictionary&gt;   &lt;Key&gt;     &lt;string&gt;22&lt;/string&gt;   &lt;/Key&gt;   &lt;Value&gt;     &lt;string&gt;cat&lt;/string&gt;   &lt;/Value&gt; &lt;/Dictionary&gt; &lt;/INSTINM&gt; </pre>	
<pre> &lt;InputResolutionNum&gt;0 &lt;/InputResolutionNum&gt; </pre>	Selected list number among the input resolution.
<pre> &lt;InputResolution&gt;   &lt;string&gt;1920x1080&lt;/string&gt;   &lt;string&gt;1280x720&lt;/string&gt;   &lt;string&gt;720x480&lt;/string&gt;   &lt;string&gt;1024x768&lt;/string&gt;   &lt;string&gt;1600x1200&lt;/string&gt;   &lt;string&gt;*&lt;/string&gt;   &lt;string&gt;-&lt;/string&gt; &lt;/InputResolution&gt; </pre>	List of resolution of input signal.
<pre> &lt;RecommendedResolution&gt;1920x1080 &lt;/RecommendedResolution&gt; </pre>	Recommended Resolution
<pre> &lt;FilterUsageTimeValid&gt;&gt;true &lt;/FilterUsageTimeValid&gt; </pre>	Validness of Filter usage time. true: valid, false: invalid
<pre> &lt;FilterUsageTime&gt;1040&lt;/FilterUsageTime&gt; </pre>	Filter usage time (unit: hour).
<pre> &lt;ReplacementLamp&gt;LAMP1 HID2 LED3&lt;/ReplacementLamp&gt; </pre>	Lamp Parts Name.
<pre> &lt;ReplacementFilter&gt;Filter1 Filter2&lt;/ReplacementFilter&gt; </pre>	Filter Parts Name.
<pre> &lt;SpVolValid&gt;true&lt;/SpVolValid&gt; </pre>	Validity of speaker volume. true: valid, false: invalid.
<pre> &lt;SpVolMin&gt;0&lt;/SpVolMin&gt; </pre>	Minimum limit of speaker volume.
<pre> &lt;SpVolMax&gt;5&lt;/SpVolMax&gt; </pre>	Maximum limit of speaker volume.

PJLinkTEST4CNT Operating Instructions

XML Tag	Contents
<SpVol>0</SpVol>	Value of speaker volume.
<MicVolValid>true</MicVolValid>	Validity of microphone volume. true: valid, false: invalid.
<MicVolMin>0</MicVolMin>	Minimum limit of microphone volume.
<MicVolMax>5</MicVolMax>	Maximum limit of microphone volume.
<MicVol>0</MicVol>	Value of microphone volume.
<Freeze>true</Freeze>	Status of FREZ command. true: freeze, false: not freeze.

**Table 11 <Disp> Items**

XML Tag	Contents
<pjCondition>0</pjCondition>	Status of projector condition. 0: normal, 1: not acceptable period, 2: error
<powr_status>0</powr_status>	Power status 0: off, 1: on, 2: cool down, 3: warm up
<inpt_status>1A</inpt_status>	Combination of Input Terminal (1~5) and number(1~Z).
<avmt_status>11</avmt_status>	AV Mute Status 11: Only image, 21: Audio, 31: image & audio, 30:off
<avmt_status_bit>0</avmt_status_bit>	Internal status of AV Mute Image: 1, Audio: 2, Image & Audio: 3, off: 0.
<erst_fan_status>0</erst_fan_status>	Fan Error 0: Error not detected, 1: Warning, 2: Error
<erst_lamp_status>1</erst_lamp_status>	Lamp Error 0: Error not detected, 1: Warning, 2: Error
<erst_temp_status>0</erst_temp_status>	Temperature Error 0: Error not detected, 1: Warning, 2: Error
<erst_cover_status>1</erst_cover_status>	Cover Error 0: Error not detected, 1: Warning, 2: Error
<erst_filter_status>1</erst_filter_status>	Filter Error 0: Error not detected, 1: Warning, 2: Error
<erst_others_status>2</erst_others_status>	Other Error 0: Error not detected, 1: Warning, 2: Error
<lamp_status_arr> <string>8247 1</string> <string>2433 0</string> </lamp_status_arr>	Lamp Status. The separator is SP(0x20). 1 <sup>st</sup> number specifies lamp usage time (unit: 1 hour). 2 <sup>nd</sup> number specifies lighting status; 1: ON, 0: OFF.

## 12 Notice & Limitation

This application doesn't work in case of the "IPv6 only environment" on Windows7.  
If you want to check IPv6 function, please use after Windows8.