

PJLinkTEST4CNT

Operating Instructions

Version 1.0

November 17, 2004

Copyright(C) 2004-2005 JBMIA All rights reserved

Table of Contents

1	Overview	3
2	Main Window.....	3
3	Menu Bar.....	5
3.1	Network.....	5
3.2	Projector.....	6
3.3	Test set up.....	6
3.4	Version	7
4	Projector Condition Set Up Area.....	8
4.1	Each Status Display Area	10
4.2	Command Log Display Area	11
5	Total Test	11
6	Total Test Result.....	12

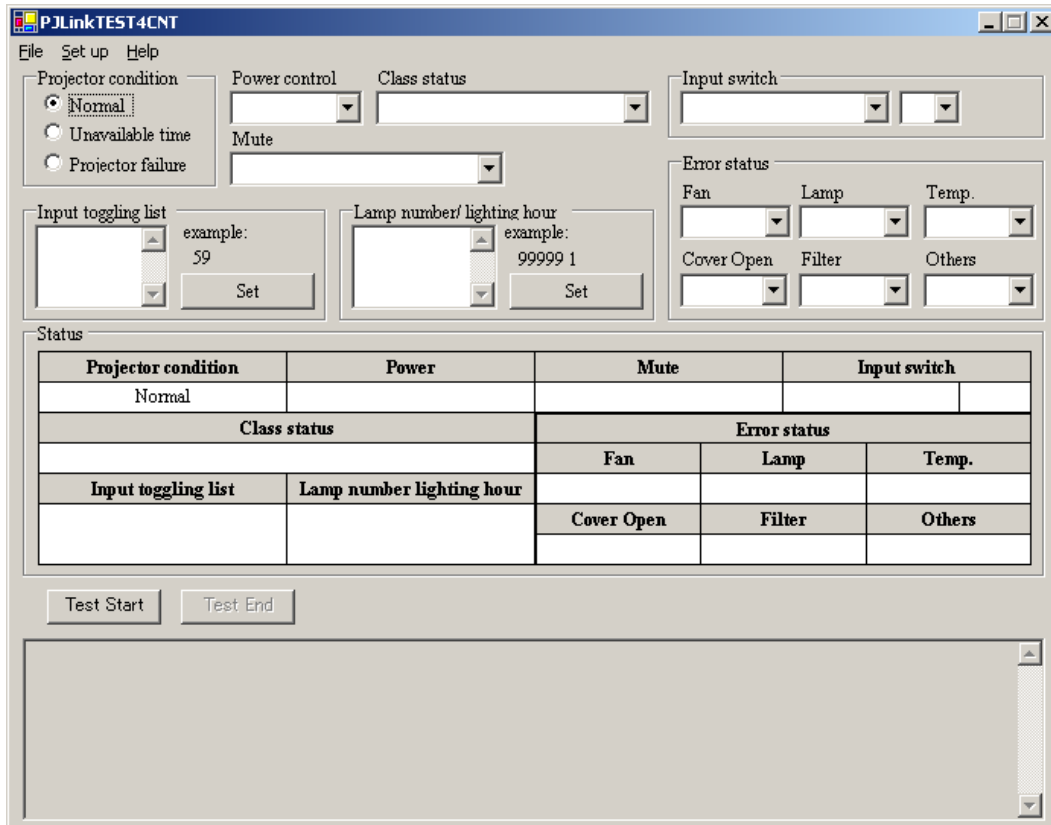
PJLink4CNT Operating Instructions

1 Overview

This manual describes operating procedures of Button Menu for PJLinkTEST4CNT.

2 Main Window

The following window will be displayed when you activate PJLinkTEST4CNT.



PJLink4CNT Operating Instructions

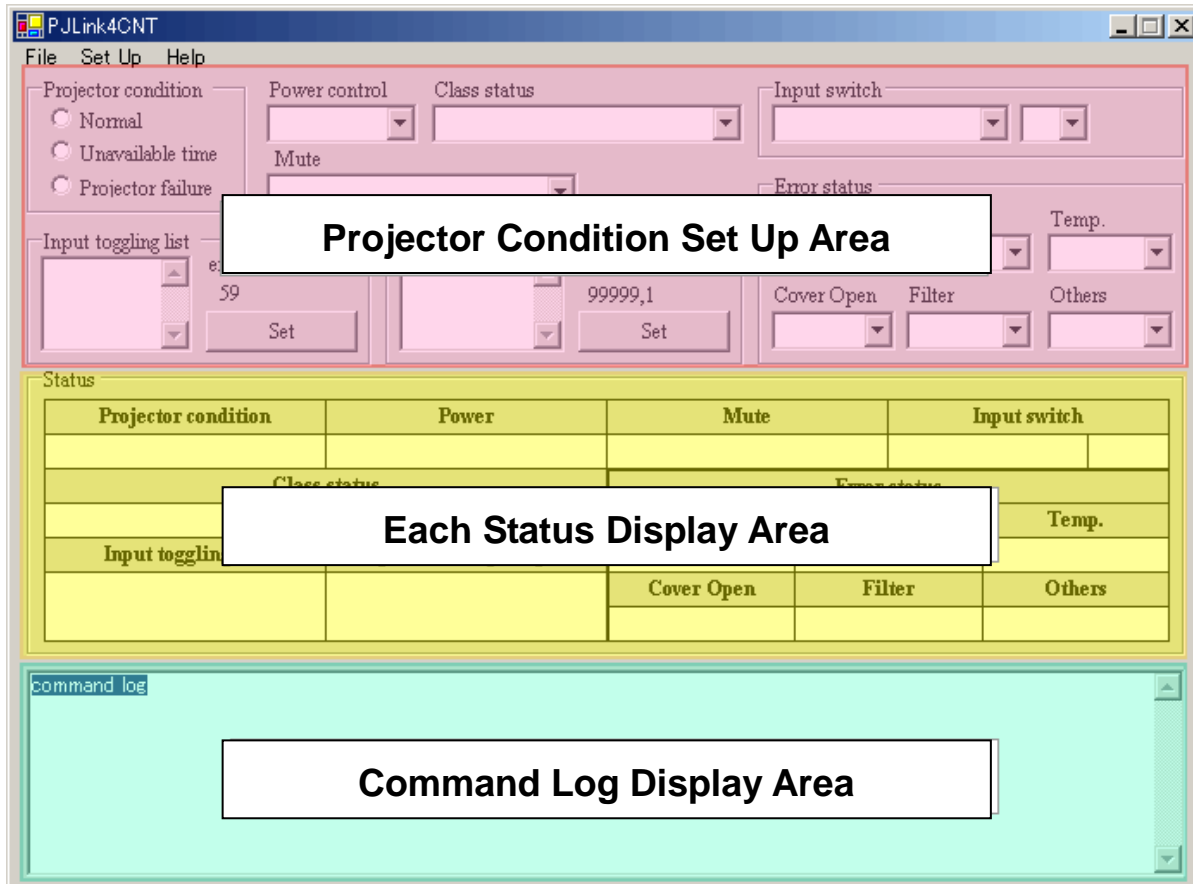
PJLinkTEST4CNT consists of three main areas.

The top of the window (pink area) is a "Projector Condition Set Up Area", and the middle of the window is a "Each Status Display Area", and the bottom of the window is a "Command Log Display Area".

The controls for setting up the projector condition will be gathered at the top of the window (pink area), and the current status of the projector set up in the top will be displayed in the middle of the window (yellow area).

PJLinkTEST4PJ and Communication log will be displayed in the bottom of the window (green area).

In addition, the name of the configuration file (*.PJF) in current use will be displayed in the title bar.



3 Menu Bar

File



Set up

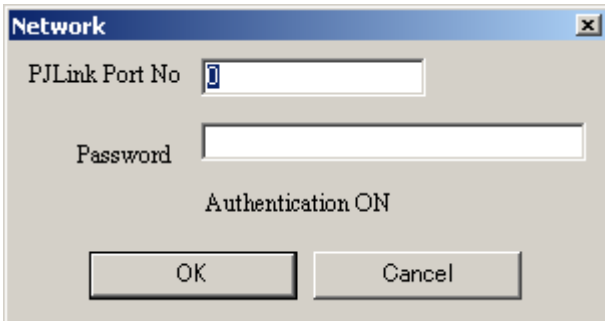


Help



Name of Main Menu	Name of Menu	Contents of Process
File	Load...	Choose an ini file, and load the specified ini file.
	Save	Save the current settings to the ini file.
	Save As...	Save the current settings as a new file.
	Exit	Exit out of the system.
Set Up	Network...	Set up about port numbers and authentication.
	Projector set up...	Set up basic information for the projector.
	Test set up...	Set up various test information.
Help	Version...	Display version information.

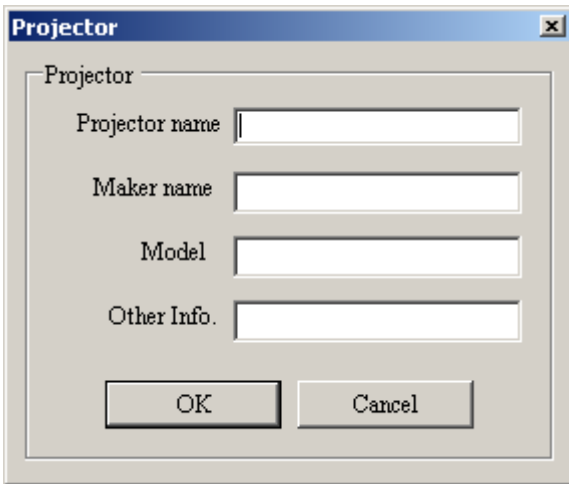
3.1 Network



Network Set Up Items

PJLink Port No	Set up port numbers used in PJLink.
Password	Set up the password used in authentication. * The password will not be displayed as "****". It will be displayed as a plain text.
Authentication	Display Authentication settings in Test settings.

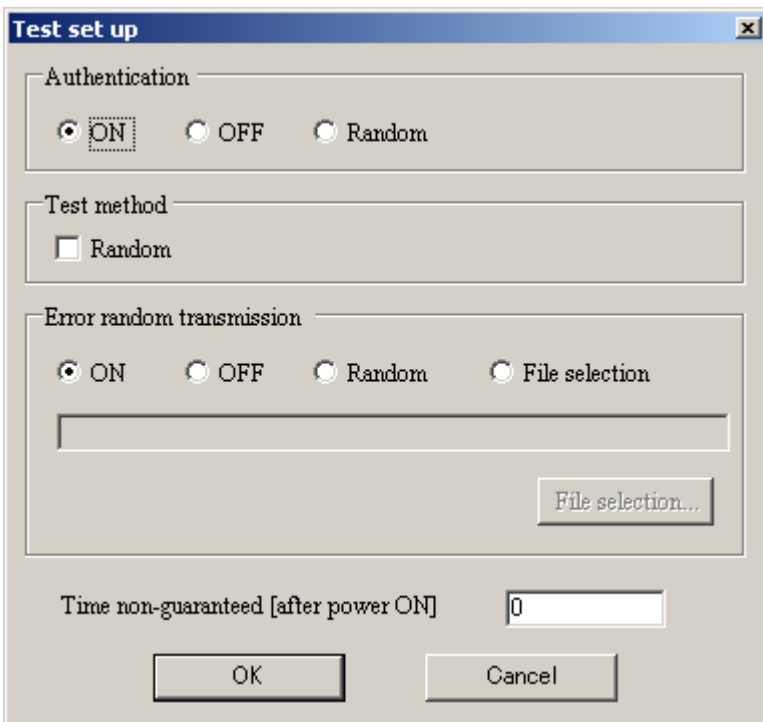
3.2 Projector



Projector Set Up Items

Projector name	Set up the projector name.
Maker name	Set up the maker name.
Model	Set up the model name.
Other Info.	Set up other information.

3.3 Test set up



Test set up Set Up Items

Authentication	Set up whether to conduct authentication. Choose from the following options. Conduct authentication (ON) / Do not conduct authentication (OFF) / Random
----------------	---

PJLink4CNT Operating Instructions

Test method	Check this box when you want to execute Random test.
Error transmission	Set up whether to execute error transmission. Choose from the following options. Execute error transmission (ON) / Do not execute error transmission (OFF) / Random (Random).
Time non-guaranteed [after power ON]	Set up Time non-guaranteed.
Test file	Display the script file used in total test.
File Selection	Display the dialog to choose the script file used in total test.

3.4 Version

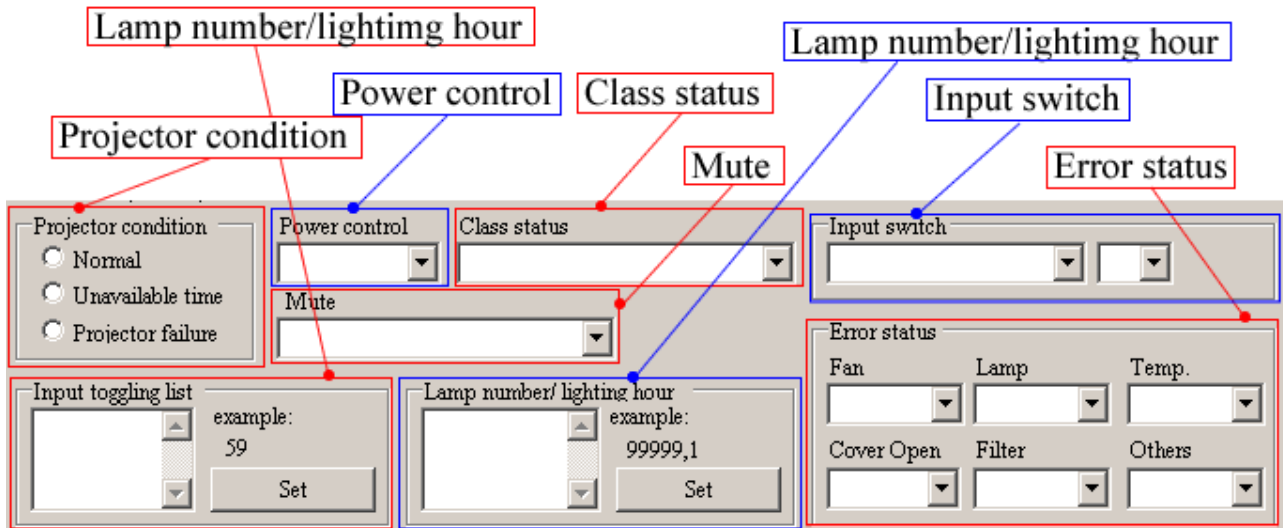
Version information will be displayed.



4 Projector Condition Set Up Area

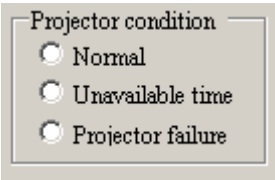
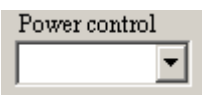


The following projector condition can be set at Projector Condition Set Up Area.

When the contents of the following items other than “Input toggling list” and “Lamp number/lighting hour” are changed, it will be immediately reflected in the settings.


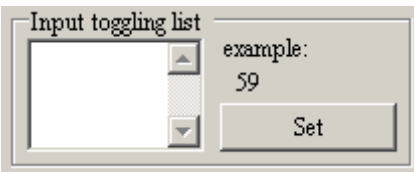
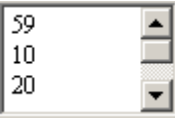
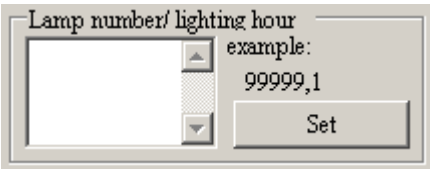
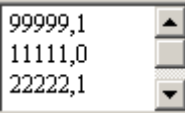
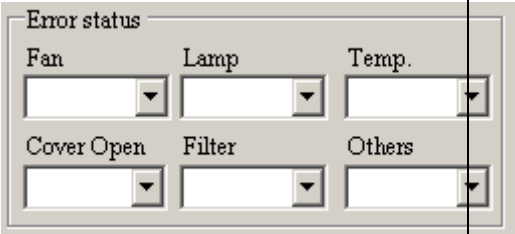


When the contents of “Input toggling list” and “Light number/lighting hour” are changed, it will be reflected in the settings

by clicking  button on each item.

Set Up Items	Contents	Remarks
Projector 	Set up the projector condition.	Choose from the following options. Normal / Unavailable time / Projector failure
Power Control 	Set up the power condition for the projector.	Choose from the following options. Power ON / Power OFF / Cooling / Warning.
Class status 	Set up the support condition for the class.	Choose from the following options. Class-2-compatible projector / Class-2-incompatible projector.
Mute 	Set up the Mute condition.	Choose from the following options. Video mute ON / Video mute OFF / Audio mute ON / Audio mute OFF / Video and Audio mute ON / Video and Audio mute OFF

PJLink4CNT Operating Instructions

Set Up Items	Contents	Remarks
<p>Input switch</p> 	<p>Set up the input source.</p>	<p>Choose from the following options. RGB / VIDEO / DEGITAL / STRAGE / NETWORK. In addition, choose from 0 to 9.</p>
<p>Input toggling list</p> 	<p>Set up the source list which enables input toggling.</p>	<p>【Set Up Example】</p>  <p>As described above, input each input source by separating with line feeds. Set up the source ranges from 10 to 59.</p>
<p>Lamp number/lighting hour</p> 	<p>Set up the lamp integrating time and lighting status.</p>	<p>【Set Up Example】</p>  <p>Lamp integrating time, Lighting status</p> <p>Input integrating time and lamp lighting status separated by “,” (a comma). Input each lamp separated by line feeds. Integrating time: Settable from 0 to 99999. Lamp status: 1:Lighting, 0: Extinction</p>
<p>Error status</p> 	<p>Set up each error status.</p>	<p>For Fan, Lamp, Temp, Cover Open, Filter, Others, choose from the following items. No error / Warning / Error</p>

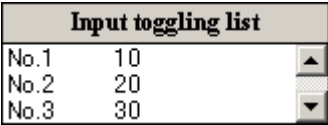
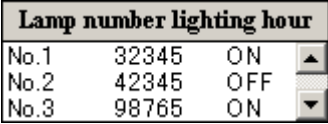
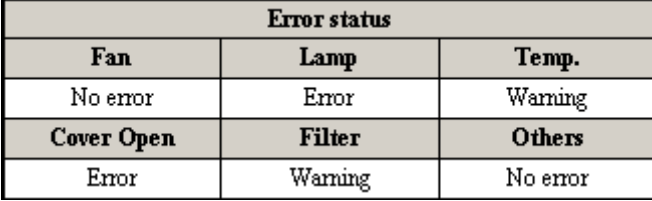
4.1 Each Status Display Area

Each Status Display Area displays the current status of the projector which is set up at Projector Condition Set Up Area at the top of the window.

Status										
Projector condition			Power			Mute		Input switch		
Unavailable time			Power ON			VIDEO & AUDIO mute OFF		NETWORK	5	
Class status					Error status					
Class-2-incompatible projector					Fan		Lamp		Temp.	
Input toggling list			Lamp number lighting hour			No error		Error		Warning
No.1	10	▲	No.1	32345	ON	Cover Open		Filter		Others
No.2	20	▼	No.2	42345	OFF	Error		Warning		No error
No.3	30	▼	No.3	98765	ON					

Status Display Items	Contents	Remarks		
Projector condition <table border="1" style="width: 100%;"> <tr><th>Projector condition</th></tr> <tr><td>Unavailable time</td></tr> </table>	Projector condition	Unavailable time	Display the projector condition in the current settings.	As the current condition, one of the following options will be displayed. Normal / Unavailable time / Projector failure
Projector condition				
Unavailable time				
Power <table border="1" style="width: 100%;"> <tr><th>Power</th></tr> <tr><td>Power ON</td></tr> </table>	Power	Power ON	Display the projector power condition in the current setting.	As the current condition, one of the following options will be displayed. Power ON/ Power OFF/ Cooling / Warning
Power				
Power ON				
Class status <table border="1" style="width: 100%;"> <tr><th>Class status</th></tr> <tr><td>Class-2-incompatible projector</td></tr> </table>	Class status	Class-2-incompatible projector	Display the class support condition in the current settings.	As the current condition, one of the following options will be displayed. Class-2-compatible projector / Class-2-incompatible projector
Class status				
Class-2-incompatible projector				
Mute <table border="1" style="width: 100%;"> <tr><th>Mute</th></tr> <tr><td>VIDEO & AUDIO mute OFF</td></tr> </table>	Mute	VIDEO & AUDIO mute OFF	Display the mute condition in the current settings.	As the current condition, one of the following options will be displayed. Video mute ON / Video mute OFF / Audio mute ON / Audio mute OFF / Video & Audio mute ON / Video & Audio mute OFF
Mute				
VIDEO & AUDIO mute OFF				
Input switch <table border="1" style="width: 100%;"> <tr><th>Input switch</th></tr> <tr><td>NETWORK 5</td></tr> </table>	Input switch	NETWORK 5	Display the input source in the current settings.	As the current condition, one of the following options will be displayed. RGB / VIDEO / DIGITAL /
Input switch				
NETWORK 5				

PJLink4CNT Operating Instructions

Status Display Items	Contents	Remarks
		STRAGE / NETWORK In addition, one of the following options will be displayed. 0 / 1 / 2 / 3 / 4 / 5 / 6 / 7 / 8 / 9
Input toggling list 	Display the source list which enables input toggling in the current settings.	It will be displayed in the list box.
Lamp number lighting hour 	Display the lamp integrating time and lighting condition in the current settings.	It will be displayed in the list box.
Error status 	Display each error status in the current settings.	For Fan, Lamp, Temp, Cover Open, Filter, Others, choose from the following items. No error / Warning / Error



4.2 Command Log Display Area

All logs communicated with PJLink4PJ will be displayed in the textbox.



5 Total Test

Total test will be started and ended by PJLink4CNT.

Total Test Button	Contents	Remarks
	Start total test.	After the preparation of total test start, the test will be started.
	End total test.	Result dialog will be displayed.

6 Total Test Result

The following window will be displayed after the end of total test at PJLink4CNT.

Result

Result

response time (sec)

Min	Ave	Max
100	0	0

number of error replay

ERR1	ERR2	ERR3	ERR4	ERRA
0	0	0	0	0

communication error **number of times which 2 sec. or more**

0 0

response time	Min	Display minimum value of response time in test.
	Ave	Display average value of response time in test.
	Max	Display maximum value of response time in test.
number of error replay	ERR1	Number of undefined command reception
	ERR2	Number of out of parameter reception
	ERR3	Number of acceptance period error reception
	ERR 4	Number of projector error reception
	ERRA	Number of password error reception
communication error		Number of communication error (Number of Socket error)
number of times which 2sec. or more		Number of times which 2 sec. or more for response.